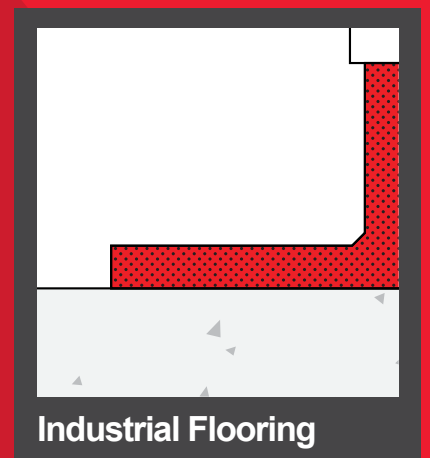




constructive solutions

INDUSTRIAL FLOORING SOLUTIONS

NITOFLOR® · CEMTOP® · PATCHROC® · PAVEROC





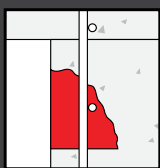
About Fosroc and Parchem

Fosroc is a world leader in construction solutions. Since the company's beginnings over 80 years ago, Fosroc has developed into an international leader in delivering construction solutions for virtually any building or infrastructure project. New or old construction above or below ground, we combine high quality products, expert technical support, customer service and innovation to give you the best solution for your project.

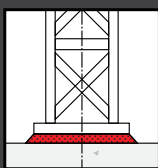
We provide construction solutions for; new and old concrete repair, grouts, waterproofing joint fillers & sealants, industrial flooring, protective coatings, surface treatments, concrete admixtures and concrete grinding aids.

Fosroc has an extensive network of offices and manufacturing locations across Europe, the Middle East, India and Asia, and is further represented in other regions across the world by distributor and licensee partners.

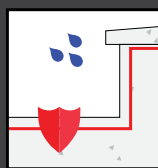
Parchem Construction Supplies, part of DuluxGroup, is the licensed manufacturer and distributor of Fosroc, Vector®, Vandex®, and EdenCrete® products in Australia, and Concrete Plus™ is the licensed distributor in New Zealand.



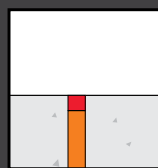
Concrete Repair



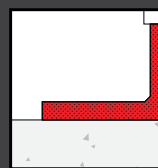
Grouts



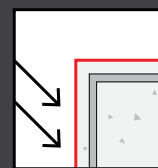
Waterproofing



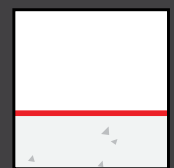
Joint Fillers & Sealants



Industrial Flooring



Protective Coatings



Surface Treatments

Fosroc Industrial Flooring Solutions

Fosroc supplies a range of advanced industrial flooring solutions. Using advanced compounds and additives, our products satisfy the high performance required for industrial flooring.

We understand that your floors are often literally the base on which your business is built, so we ensure we get things right from the ground up.

Fosroc collaborates with all parties involved in your project to deliver complete industrial flooring solutions. We make sure all aspects of design and performance are factored in at the start, and will partner with you at every stage of the process.

Solutions can be tailored to projects of any size and scale, with our wide range of sealers, cementitious and resin-based technologies.

Our Range

Hardeners and Densifiers

Nitoflor HD
Nitoflor HD-S
Nitoflor Sicaltop

Thin Film Coatings

Nitoflor FC100
Nitoflor FC130
Nitoflor PA

High Build Coatings

Nitoflor FC 150 HP/SL
Nitoflor N
Nitoflor PU200

Floor Toppings

Nitoflor PU600
Cemtop Screed 3-40mm
Cemtop GP Advanced
Cemtop XD
Cemtop HD30

Patch Repair Mortars

Nitomortar 903 + F4 Fillers
Patchroc GP
Patchroc C
Paveroc

Slip Resistance Solutions

Nitoflor Anti-Slip Grains 01
Nitoflor Anti-Slip Grains 02
Nitoflor Anti-Slip Grains 11
Nitoflor Anti-Slip Grains 21
Nitoflor Anti-Slip Grains 31
Nitoflor Anti-Slip Grains 41

Colour Pots

Nitoflor Colour Pots
Nitoflor PU Colour Pots

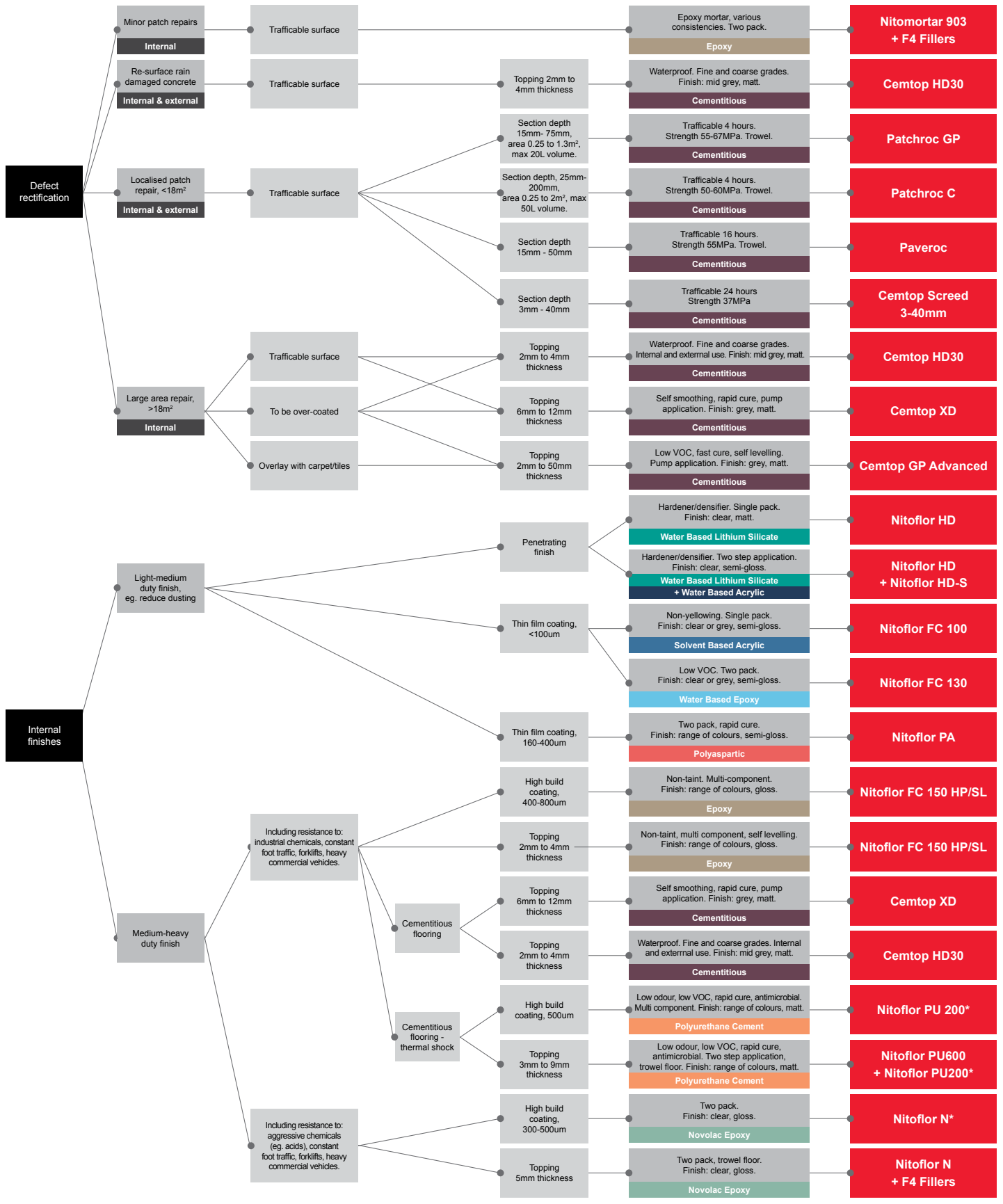


Product Selector Industrial Flooring

To increase abrasion resistance use Nitoflor Sicaltop - dry broadcast to wet concrete. Nitoflor Sicaltop is a silica carbide/alumina additive for light to heavy duty finishes.



This selector is a general guide only, please contact your Fosroc Representative for more information.



Please always refer to the product TDS before making your final selection or speak to your Fosroc representative.

*Nitoflor PA can be used as a top coat to increase UV and abrasion resistance, or provide colour options.

Industrial Flooring Product Guide

	Nitoflor HD	Nitoflor HD-S	Nitoflor Sicaltop	Nitoflor FC100	Nitoflor FC130	Nitoflor PA	Nitoflor FC 150 HP/SL
Previously Known As / Replaces	Durafloor HD	Durafloor HD-S					Nitoflor FC 150 HP ,Nitoflor FC 150 HP -FC, Nitoflor SL, Nitoflor SLX
Product Type	Hardener / densifier	Hardener / densifier	Hardener	Thin film coating	Thin film coating	Thin film coating	Coating/Topping
Description	A penetrating finish to reduce dusting of concrete and improve wear, stain and abrasion resistance with one coat. The finished floor will retain its concrete appearance.	Nitoflor HD-S must be used with Nitoflor HD as a two component system. Reduces dusting of concrete and improves wear, stain and abrasion resistance with a semi-gloss finish.	Produces a non-rusting, extremely hard wearing, abrasion and slip resistant surface to new concrete floors. Dry powder broadcast to wet concrete to form a monolithic bond with the base concrete.	General purpose concrete sealer to reduce dusting, and provide a more easily cleaned surface with resistance to oils, dirt and mild chemicals.	Water based, low odour, low VOC two part epoxy coating. Reduces dusting and produces an easily cleaned surface with resistance to most oils dirt and mild chemicals.	Fast cure, two part, polyaspartic floor coating for use as a UV and abrasion resistant top coat for resin floor systems, or as a stand alone coating over correctly prepared concrete surfaces.	Self smoothing, epoxy resin system. Can be applied as a roll coat as well as a 2-4mm self-levelling topping, it provides a dense, impervious, coloured and chemically resistant floor surface which is hygienic and easy to clean.
General Advantages	Can be used in the process of polishing concrete.	Provides a higher sheen finish. Ideal for polished concrete.	Concrete floors treated with Nitoflor Sicaltop show >200% improvement in abrasion resistance compared to untreated floors.	Non-yellowing, semi-gloss finish.	Can be used on asphalt that is more than 3 months old.	High wear, abrasion and UV resistance.	Fast application, resistant to "epoxy bloom", HACCP certified
Technology	Water Based Lithium Silicate	Nitoflor HD - Water Based Lithium Silicate Nitoflor HD-S - Water Based Acrylic	Silicon Carbide / Alumina Dry Powder	Solvent Based Acrylic	Water Based Epoxy	Polyaspartic	Epoxy
Internal / External	Internal	Internal	Internal	Internal	Internal	Internal / External	Internal
Typical Applications	New or existing floors in manufacturing facilities, warehouses and storage facilities.	New or existing floors in manufacturing facilities, warehouses, restaurants, retail areas, supermarkets, grocery stores and storage facilities.	Industrial areas subject to the heaviest traffic eg. loading bays, trucking lanes, car parks, warehouse floors, repair workshops, and machine shops.	Engineering plant floors, manufacturing, warehouses, commercial & residential building, retail, supermarkets, hotel and car parks.	Engineering plant floors, manufacturing, warehouses, commercial & residential building, retail, supermarkets, hotel and car parks.	New or existing floors in food, beverage and chemical industries, hospitals, schools, kitchens and other high traffic applications.	hospital clean rooms, laboratories, food processing plants, film studio floors, prisons, supermarkets and light industrial plants.
Trafficability	Medium	Medium	High	Low - Medium	Medium	High	High
Slip resistance	N/A	NA	Variable, up to P5	N/A	P4	P3 - with Nitoflor Anti-Slip Grains 41.	P5 - with Nitoflor Anti-Slip Grains 01/02
Colours	Clear	Clear	Grey Special colour (MTO)	Clear	Clear Silver Grey Mid Grey	Clear Pipeline Grey 6 Australian standard colours (MTO)	Tintable with Nitoflor Colour Pots to a range of colours.
Finish	Matt	Semi-gloss	N/A	Semi-gloss	Semi-gloss	Semi-gloss	Gloss
Chemical resistance	★	★	★	★	★	★★	★★
Abrasion resistance	★★	★	★★★	★	★★	★★★	★★
Number of Components	One	One	One	One	Two	Two	Two
Kit Size	5L 20L	5L 20L	20KG	20L	16L	8L 40L	8L - available both un-tinted and pre-tinted to Koala Grey 16L - available both un-tinted and pre-tinted to Koala Grey .7kg colour pots 20kg Anti Slip Grains
Pot Life @ 20°C	N/A	N/A	N/A	N/A	2 hours	40 minutes	30 Minutes
Number of coats / applications	1	2-3	Broadcast	2	2-3	1-2	1-2
Compressive Strength @ 28 days	N/A	N/A	95 MPa	N/A	N/A	N/A	90 Mpa
Time between coats @ 20°C	N/A	2 hours	N/A	2-4 hours	6-24 hours	1.5 to 2 hours (min) 18 hours (max)	8 hours
Foot traffic @ 20°C	1 hour	1 hour	N/A	3 hours	24 hours	2 to 2.5 hours	8 - 48 hours
Vehicle traffic @ 20°C	N/A	3 days	N/A	7 days	72 hours	24 hours	48 Hours
Full cure @ 20°C	24 hours	3 days	28 days	7 days	7 days	24 hours	7 Days
Service temperature range	N/A	0-70°C	0-250°C	< 50°C	< 50°C	<80°C	<60 c
Typical coverage / dosage rate	7 - 10 m ² /l	7 - 10 m ² /l Nitoflor HD 30 - 40 m ² /l Nitoflor HD-S	2 - 4 kg/m ²	6-8 m ² /l first coat	6-8 m ² /l first coat 8-10 m ² /l second coat	5-12.5 m ² /l	4m ² /L
Total dry film thickness @ recommended spreading rate	N/A	N/A	N/A	20-26 µm	100 µm	160-400 µm	2-4mm (self leveller application) 0.2 -4mm (roll coat application)
VOC content	11 g/l	33 g/l	7 g/l	712 g/l Clear	64.9 g/l Clear 51.4 g/l Silver Grey	20 g/l	9 g/l
Product codes	FC605105-5L FC605105-20L	FC605110-5L FC605110-20L	FC602040-20KG Grey FC602045-20KG Special colour MTO	FC610002-20L Clear	FC612182-2.9L Clear Base FC612181-13.1L Clear Hardener FC612184-3L Colour Base FC612183-13L Silver Grey Hardener FC612196-13L Mid Grey Hardener	FC605050-4L Clear Part A FC605051-4L Clear Part B FC605052-4L Pipeline Grey Part B FC605050-20L Clear Part A FC605051-20L Clear Part B	FC605121-5.6L Nitoflor FC150 HP/SL Base of 8L Pack FC605122-2.15L Nitoflor FC150 HP/SL Hardener of 8L Pack Nitoflor FC150 HP/SL Koala Grey is also supplied as pre-tinted kits in 8 litre and 16 litre. FC605123-5.85L Nitoflor FC150 HP/SL Koala Grey Base of 8 litre kit FC605122-2.15L Nitoflor FC150 HP/SL Hardener of 8L Pack FC605123-11.7L Nitoflor FC150 HP/SL Koala Grey Base of 16 litre kit FC605122-4.3L Nitoflor FC150 HP/SL Hardener of 16 litre kit FC605124-11.7L Nitoflor FC150 HP/SL Base Spec Colour FC605122-4.3L Nitoflor FC150 HP/SL Hardener Spec Colour
Colour pots	N/A	N/A	N/A	N/A	N/A	N/A	1x700g Nitoflor Colour Pot per 8L base
Primer (depends on surface condition)	No primer required	No primer required	N/A	No primer required	No primer required	No primer required	Nitomortar 903 - when applied as a self leveller.
Clean up	Water	Water	N/A	Solvent 10	Water	Solvent 10	Solvent 10

★ Good ★★ Very Good ★★★ Excellent

Please always refer to the product TDS before making your final selection or speak to your Fosroc representative.

Industrial Flooring Product Guide (Continued)

	Nitoflor N	Nitoflor PU200	Nitoflor PU600	Cemtop GP Advanced	Cemtop Screed 3-40mm	Cemtop XD	Cemtop HD30	Nitomortar 903 + F4 Fillers	Patchroc GP	Patchroc C	Paveroc
Previously Known As / Replaces	Duraflor N	Duraflor X	Duraflor X				Aegis MSP				
Product Type	High build coating	High build coating	Floor topping	Floor topping	Floor Topping	Floor topping	Floor topping	Patch repair mortar	Patch repair mortar	Patch repair mortar	Patch repair mortar
Description	Two part novolac epoxy floor coating for areas where aggressive chemical spills occur and high wear resistance is required. Add Nitomortar F4 fillers for a 5mm trowel finish.	Low odour, low VOC cementitious polyurethane floor sealer with anti-microbial properties. Produces a hard-wearing, chemically resistant floor that can handle extreme temperatures.	Nitoflor PU600 must be used with Nitoflor PU200. Low odour, low VOC cementitious polyurethane floor topping with anti-microbial properties. Produces a hard-wearing, chemically resistant floor that can handle extreme temperatures.	Low VOC, fast cure, heavy duty floor topping that produces a smooth, hard surface. Not a trafficable surface, must be overlaid with carpet/tiles or over-coated.	Cemtop Screed is used to provide a strong and durable cementitious screed that can be applied to a wide variety of substrates, including concrete, concrete blocks, aerated concrete blocks (AAC) and fibre cement.	Industrial floor topping for large jointless areas subject to foot & forklift traffic. Apply at 6-12mm. Can be over-coated.	Durable polymer modified mortar, designed to re-surface rain damaged concrete. Available in fine grade for squeegee application; coarse grade for trowel application & heavy duty remedial work.	Two pack epoxy mortar with high chemical and mechanical resistance.	Floor & pavement, fast setting patch repair mortar for use where interruption to traffic must be minimised, trafficable within 4 hours.	Floor & pavement, fast setting patch repair mortar for use where interruption to traffic must be minimised, trafficable within 4 hours.	Floor & pavement fast setting, large area repair mortar designed to minimise down-time. Accepts pedestrian traffic within 16 hours.
General Advantages	Resistant to highly aggressive chemicals.	Rapid cure, handles extreme temperatures, non-tainting.	Rapid cure, handles extreme temperatures, non-tainting.	Pump apply in thicknesses from 2mm to 50mm without the addition of aggregate.	Can be applied directly onto prepared concrete floors, eliminates traditional sand cement screeds. Excellent adhesion to prepared substrates. RCS (Respirable Crystalline Silica) Hazard Free	Pump application, rapid cure.	Produces a cementitious, waterproof surface.	Produces epoxy mortars of various consistencies.	Single pours up to 20L volume. Trafficable within 4 hours.	Single pours up to 50L volume. Trafficable within 4 hours.	Bay sizes up to 18m ² . Trafficable within 16 hours.
Technology	Novolac Epoxy	Polyurethane Cement	Polyurethane Cement	Cementitious	Cementitious	Cementitious	Cementitious	Epoxy	Cementitious	Cementitious	Cementitious
Internal / External	Internal	Internal	Internal	Internal	Internal/External	Internal	Internal / External	Internal / External	Internal / External	Internal / External	Internal / External
Typical Applications	Mining industry, engineering plants, chemical processing, bund lining, laboratories, pharmaceutical industry, and industrial kitchens.	Food & beverage industries, industrial kitchens, freezer and cool rooms, industrial plant rooms, manufacturing zones, laboratories, warehouses.	Food & beverage industries, industrial kitchens, freezer and cool rooms, industrial plant rooms, manufacturing zones, laboratories, warehouses.	Residential, commercial and light industrial areas.	Used to correct falls in concrete substrates prior to the application of waterproofing membranes and floor finishes. Internal or external applications. Use in conjunction with Nitoprime 330. For use in areas of up to 5m ²	Industrial environments such as warehouses, light to medium engineering operations, food processing plants and car parks.	Suitable for interior and exterior applications including concrete, concrete blocks, aerated concrete blocks (AAC) and fibre cement.	Small repairs.	Emergency reinstatement of localised concrete pavements, airport aprons, access ramps, roadways, gangways and warehouse floors.	Emergency reinstatement of localised concrete pavements, airport aprons, access ramps, roadways, gangways and warehouse floors.	Reinstatement of large areas of concrete pavements and floors to avoid the total replacement of bays.
Trafficability	Medium - High	Medium - High	High	N/A	High	High	High	N/A	High	High	High
Slip resistance	P5 - with Nitoflor Anti-Slip Grains	P5 - with Nitoflor Anti-Slip Grains 01	P5 - with Nitoflor Anti-Slip Grains 01, 11 or 21	N/A	N/A	P4	P4	N/A	N/A	N/A	N/A
Colours	Clear	Tintable with Nitoflor PU Colour Pigment to a range of colours.	Tintable with Nitoflor PU Colour Pigment to a range of colours.	Grey	Grey	Grey White (MTO)	Mid Grey	Clear Amber - Sandy Beige	Grey	Grey	Grey
Finish	Gloss	Matt	Matt	Matt	Matt	Matt	Matt	Matt	Matt	Matt	Matt
Chemical resistance	★★★	★★★	★★★	N/A	N/A	★	★★	★★	★★	★★	★★
Abrasion resistance	★★	★★★	★★★	N/A	N/A	★★★	★★★	★★	★★★	★★★	★★★
Number of Components	Two	Four	Four	One	One	One	Two	Three	One	One	One
Kit Size	25L	9.85kg	18.45kg	20kg	20kg	18kg	20kg	6L 30L + Fillers	20kg	20kg	20kg
Pot Life @ 20°C	30 minutes	15 minutes	15 minutes	N/A	N/A	N/A	N/A	30 minutes	25-30 minutes	25-30 minutes	2 hours
Number of coats / applications	2	1-2	2-3	1	1	1	1	1	1	1	1
Compressive Strength @ 28 days	Clear coating 85MPa Trowel floor 60MPa	N/A	50MPa	30 MPa	37 MPa	27 MPa	57 MPa	45-76MPa	55-67MPa	50-60MPa	55MPa
Time between coats @ 20°C	4 hours	4-6hours	5 hours	N/A	N/A	N/A	N/A	Max 48 hours	N/A	N/A	7 hours
Foot traffic @ 20°C	6 hours	24 hours	24 hours	4 hours	16 Hours	2-4 hours	24 hours	24 hours	2-4 hours	2-4 hours	16 hours
Vehicle traffic @ 20°C	24 hours	48 hours	48 hours	N/A	24 Hours	24-36 hours	48 hours	7 days	2-4 hours	2-4 hours	24 hours
Full cure @ 20°C	7 days	7 days	7 days	28 days	28 Days	28 days	28 days	7 days	7 days	7 days	7 days
Service temperature range	120°C	0-80°C	-25°C to 100°C	N/A	<60°C	80°C	3°C-60°C	60°C	10°C-60°C	10°C-60°C	10°C-60°C
Typical coverage / dosage rate	4-5 m ² /l clear coating	0.75 kg/m ²	5.2-8.7 kg/m ²	12L/20kg bag	12.6L/20kg bag	10.6L/18kg bag	10L/20kg pack	N/A (Varies)	10L/20kg	9.6L/20kg	9.4L/20kg
Total dry film thickness @ recommended spreading rate	400 µm	0.5 mm	3-6 mm	2-50 mm	3-40 mm	6-12 mm	2-4 mm	N/A (Varies)	15-75 mm deep	25-200 mm deep	15-50 mm deep
VOC content	28 g/l	49 g/L	25 g/L	21.6 g/l	N/A	49 g/l	N/A	12 g/l	N/A	N/A	N/A
Product codes	FC605170-15L Base FC605175-10L Hardener FC312060-20KG Nitomortar F4 Fillers	FC605200-2.60KG Nitoflor PU600 / PU200 - Part A Base FC605201-2.80KG Nitoflor PU600 / PU200 - Part B Hardener FC605192-3.8KG Nitoflor PU200 - Part C Filler*	FC605200-2.60KG Nitoflor PU600 / PU200 - Part A Base FC605201-2.80KG Nitoflor PU600 / PU200 - Part B Hardener FC605202-12.4KG Nitoflor PU600 - Part C Filler	FC630088-18KG	FC602057-20KG	FC602055-18KG Grey FC602056-18KG White MTO	FC652021-18.6KG Powder Fine FC652023-18.6KG Powder Coarse FC652022-1.4L Wet Mix	FC381025-6L Pack FC381019-20L Base (30L kit) FC381018-10L Hardener (30L kit) FC312060-20KG Nitomortar F4 Fillers 20kg	FC342070-20KG	FC342060-20KG	FC302080-20KG
Colour pots	N/A	One Nitoflor PU Colour Pot required per 9.85kg pack.	One Nitoflor PU Colour Pot required per 18.45kg pack.	N/A	N/A	N/A	N/A	N/A	N/A	N/A	N/A
Primer (depends on surface condition)	Nitomortar 903 or Nitoflor N clear	No primer required	Nitoflor PU200 or Nitoflor PU600 as a scratch coat	Diluted Nitoprime 330	Diluted Nitoprime 330	Diluted Nitoprime 330	Diluted Nitoprime 330	No primer required	Nitobond AR or diluted Nitoprime 330	Nitobond AR or diluted Nitoprime 330	Nitobond AR or diluted Nitoprime 330
Clean up	Solvent 10	Solvent 10	Solvent 10	Water	Water	Water	Water	Solvent 10	Water	Water	Water

★ Good ★★ Very Good ★★★ Excellent

Please always refer to the product TDS before making your final selection or speak to your Fosroc representative.

Product Selector

Industrial Floor Finishes

This selector is a general guide only, please contact your Fosroc Representative for more information.

	Hardener / Densifier			Thin Film Coating			High Build Coating			Floor Topping				
Suitable for:	Nitoflor HD	Nitoflor HD-S	Nitoflor Sicaltop	Nitoflor FC100	Nitoflor FC130	Nitoflor PA	Nitoflor FC 150 HP/SL	Nitoflor N	Nitoflor PU200	Nitoflor FC 150 HP/SL	Nitoflor PU600	Cemtop GP Advanced	Cemtop XD	Cemtop HD30 (Aegis MSP)
Airport hangers						■	■	■		■			■	
Bunds						■	■	■	■		■		■	■
Car parks	■		■	■	■	■	■		■				■	■
Chemical resistance						■	■	■	■	■	■			■
Cleanrooms						■	■		■	■	■			
Concrete pavements	■			■	■								■	■
Coves						■	■	■						
Dusting - reduce dusting of concrete surface	■	■		■	■	■								
Engineering operations - light to medium			■			■			■				■	■
Engineering operations - medium to heavy			■								■			
Food courts	■	■			■	■	■						■	■
Food processing areas						■	■	■	■	■	■		■	■
Film studios						■	■			■		■	■	
Hospitals						■	■	■	■	■	■	■	■	■
Kitchens					■	■	■	■	■		■		■	■
Laboratories						■	■	■	■	■	■		■	■
Industrial - light	■			■	■	■	■	■	■	■	■		■	■
Industrial - heavy			■				■	■	■	■	■		■	■
Loading bays	■		■						■		■			■
Machine shops	■		■			■			■		■		■	■
Manufacturing facilities	■	■	■			■	■		■		■			■
Mining processing - acid proof								■	■		■			■
Prisons & correctional facilities						■	■	■	■	■	■			■
Pedestrian areas - light to heavy foot traffic	■	■			■	■	■						■	■
Plant rooms						■	■	■	■	■	■		■	■
Restaurants	■	■				■			■				■	
Retail	■	■										■	■	■
Schools					■	■	■	■				■	■	
Storage facilities	■	■			■	■	■	■	■				■	■
Supermarkets	■	■				■	■						■	■
Trucking lanes			■										■	■
Underlayment for carpet & tiles												■		
Vehicle traffic - medium - heavy	■		■				■						■	■
Vehicle traffic - light - medium	■			■	■	■	■		■				■	■
Warehouses	■	■	■	■	■	■			■		■		■	■

Please always refer to the product TDS before making your final selection or speak to your Fosroc representative.

Colour Charts

Standard colour range for Nitoflor FC 150 HP/SL



BLACK N61



CURTAIN CALL



FERN GREEN G24



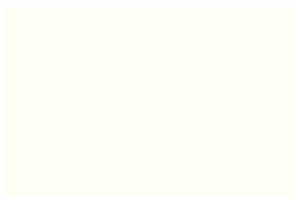
HARBOUR BLUE B24



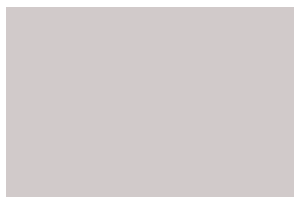
KOALA GREY N45



LIGHT GREY BLUE B44



OFF WHITE Y35



PASTEL GREY N12



PIPELINE GREY N43



RASPBERRY R54



SAFETY YELLOW



SAND Y44



SILVER GREY N24

Nitoflor Colour Pots

Product code	Size	Colour
FC605135-0.7KG	700G	BLACK N61
FC605147-0.7KG	700G	CURTAIN CALL
FC605137-0.7KG	700G	FERN GREEN G24
FC605138-0.7KG	700G	HARBOUR BLUE B24
FC605139-0.7KG	700G	KOALA GREY N45
FC605140-0.7KG	700G	LIGHT GREY BLUE B44
FC605141-0.7KG	700G	OFF WHITE Y35
FC605142-0.7KG	700G	PASTEL GREY N12
FC605149-0.7KG	700G	PIPELINE GREY N43
FC605143-0.7KG	700G	RASPBERRY R54
FC605144-0.7KG	700G	SAFETY YELLOW
FC605145-0.7KG	700G	SAND Y44
FC605146-0.7KG	700G	SILVER GREY N24
FC605148-0.7KG	700G	SPECIAL COLOUR

Standard colour range for Nitoflor FC130



MID GREY



SILVER GREY N24

Nitoflor FC130 Colours

Product code	Size	Colour
FC612184-3L COLOUR BASE	3L	
FC612183-13L SILVER GREY HARDENER	13L	SILVER GREY
FC612196-13L MID GREY HARDENER	13L	MID GREY

* Colours shown are as close as possible to actual colours. Please note due to limitations of the printing process, photographic and printed images may not represent the true colour. Special colour packs are available upon request for further information please contact your Fosroc representative or Parchem Customer Service.

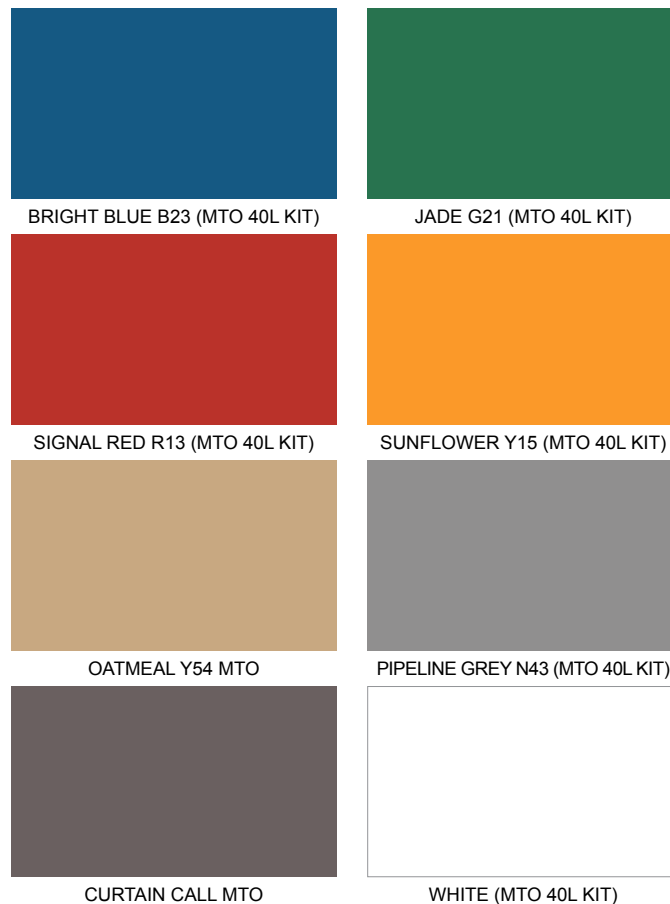
Standard colour range for Nitoflor PU600 & Nitoflor PU200
Available in seven colours including six Australian Standard colours.



Nitoflor PU Colour Pots

Product code	Size	Colour
FC605229-0.65KG	650G	BRIGHT BLUE B23
FC605228-0.65KG	650G	CURTAIN CALL
FC605225-0.65KG	650G	JADE G21
FC605230-0.65KG	650G	OATMEAL Y54
FC605227-0.65KG	650G	PIPELINE GREY N43
FC605226-0.65KG	650G	RED OXIDE R63
FC605231-0.65KG	650G	SUNFLOWER Y15

Standard colour range for Nitoflor PA
Available as a clear and eight colours, including six Australian Standard colours.



Nitoflor PA Colour Range

Product code	Size	Colour
FC605051-4L	4L	CLEAR
FC605055-4L	4L	BRIGHT BLUE B23
FC605053-4L	4L	CURTAIN CALL MTO
FC605056-4L	4L	JADE G21
FC605058-4L	4L	OATMEAL Y54 MTO
FC605052-4L	4L	PIPELINE GREY N43
FC605054-4L	4L	SIGNAL RED R13
FC605057-4L	4L	SUNFLOWER Y15
FC605059-4L	4L	WHITE
FC605051-20L	20L	CLEAR
FC605055-20L	20L	BRIGHT BLUE B23 MTO
FC605053-20L	20L	CURTAIN CALL MTO
FC605056-20L	20L	JADE G21 MTO
FC605058-20L	20L	OATMEAL Y54 MTO
FC605052-20L	20L	PIPELINE GREY N43 MTO
FC605054-20L	20L	SIGNAL RED R13 MTO
FC605057-20L	20L	SUNFLOWER Y15 MTO
FC605059-20L	20L	WHITE MTO

Please note, some colours are Made-to-Order (MTO). Made-to-Order (MTO) colours need to be ordered by contacting Customer Service or your Fosroc representative. Minimum Order Quantities (MOQ), Order Quantity Breaks and Lead Times apply.

Slip Resistance Solutions

The Nitoflor Anti-Slip Grains range provides slip resistant options for epoxy roll-coats, polyurethane cement systems, polyaspartic coatings and for tamping in to wet concrete.

Name	Technology	Nominal size	Colour	Primary use	Recommended dosage (broadcast)
Nitoflor Anti-Slip Grains 01	Graded #16/30 silica sand	0.5 – 1.0mm	Natural sand	For use with Nitoflor epoxy roll-coats and polyurethane cement flooring systems. Can be overcoated with Nitoflor PA.	Epoxy roll-coats: Light effect: 50 to 100g/m ² Fully blinding: up to 500g/m ² Polyurethane cement: 3 to 4kg/m ²
Nitoflor Anti-Slip Grains 02 (Previously known as Nitoflor Medium Grit)	Graded #30/60 silica sand	0.25 - 0.5mm	Natural sand	For use with Nitoflor epoxy roll-coats. Can be overcoated with Nitoflor PA.	Light effect: 50 to 100g/m ² Fully blinding: up to 500g/m ²
Nitoflor Anti-Slip Grains 11	>99% graded #16 Aluminium Oxide	0.5 – 1.0mm	White	For use with Nitoflor polyurethane cement systems. Can be overcoated with Nitoflor PA. Ideal for wet zones and floors that require hot water or steam cleaning.	2 to 3kg/m ²
Nitoflor Anti-Slip Grains 21	>70% graded #16/30 Calcined Bauxite	0.5 – 1.0mm	Buff	For use with Nitoflor polyurethane cement systems. Can be overcoated with Nitoflor PA. Ideal for wet zones and floors that require hot water or steam cleaning.	2 to 3kg/m ²
Nitoflor Anti-Slip Grains 31 (Previously known as Nitoflor Anti-Slip Grains)	>92% Silicon Carbide	0.5 - 1.4mm	Silvery/Black	For tamping into wet concrete to provide slip resistance as the concrete wears.	0.5kg/m ²
Nitoflor Anti-Slip Grains 41	Graded HDPE granules	0.2 - 0.35mm	White	Stir in to Nitoflor PA before application of the first coat.	25g/l



Fosroc Technology Advantages & Limitations

		Water Based Acrylic	Solvent Based Acrylic	Water Based Epoxy	Epoxy	Novolac Epoxy	Polyurethane Cement	Polyaspartic
Nitoflor General Advantages	Low odour	✓	✗	✓	✓	✓	✓	✓
	Low VOC	✓	✗	✓	✓	✓	✓	✓
	UV resistant	✗	✓	✗	✗	✗	✗	✓
	Handles thermal shock	✗	✗	✗	✗	✗	✓	✗
	Application type	Spray then microfibre mop	Brush, roller or spray	Brush, roller or spray	Brush, roller, spray or trowel	Brush, roller, spray or trowel	Trowel	Brush, roller or spray
Performance Comparison	Abrasion resistance	★	★	★	★★	★★	★★★★	★★★★
	Chemical resistance	★	★	★	★★	★★★★	★★★★	★★

★ Good ★★ Very Good ★★★ Excellent





constructive solutions

World leaders in construction solutions

Fosroc is a world leader in the delivery of virtually any type of construction project, combining high quality products, expert technical support, customer service and innovation.

AU 1800 812 864 fosroc.com.au

NZ 0800 657 156 fosroc.co.nz

Parchem Construction Supplies Pty Ltd 1956 Dandenong Rd, Clayton VIC AUS 3168
Concrete Plus Ltd 150 Hutt Park Road, Gracefield, NZ 5010

* Fosroc, Nitoflor, Nitoseal, Cemtop and the Fosroc logo, are the trade marks of Fosroc International Limited, used under licence. Aegis and Patchroc are registered trade marks.

Project images are representations of the types of projects these products can be used for.