

Fosroc® Proofex® PGP Sleeve



constructive solutions

PVC anchor sleeve

Uses

To provide a water-tight seal around anchor penetrations.

Commonly used in tunnel construction applications where anchors are used to carry the dead load of the reinforcement of the final lining.

- Below ground waterproofing
- Tunnels

Advantages

- Pre-fabricated ready to install element
- Quick and easy installation
- Perfect waterproof seal around the steel anchor
- Pre-welded piece to ensure perfect seal

Description

Proofex PGP Sleeve is a closed system made of hard PVC tube with a flange. The flange is welded to a shoulder of 2mm flexible Proofex PGP membrane tunnelling grade. The shoulder will facilitate an on-side welded connection with the existing Proofex PGP membrane.

Proofex PGP Sleeve is a pre-fabricated ready to install piece that has the following dimensions:

- Height: 200mm
- Sleeve Dia: 28mm
- Shoulder Dia: 120mm
- Welded piece Dia: 300mm

Application Instructions

Wherever there is a requirement to bore a hole and insert a steel anchor, Proofex PGP Sleeve has to be used.

Once Proofex PGP membrane is installed, a hole is drilled into the concrete/shotcrete through the geomembrane. The hole is cleaned and Nitomortar AP epoxy paste is applied into the bored hole and Proofex PGP Sleeve installed into the bore hole before the Nitomortar AP has hardened.

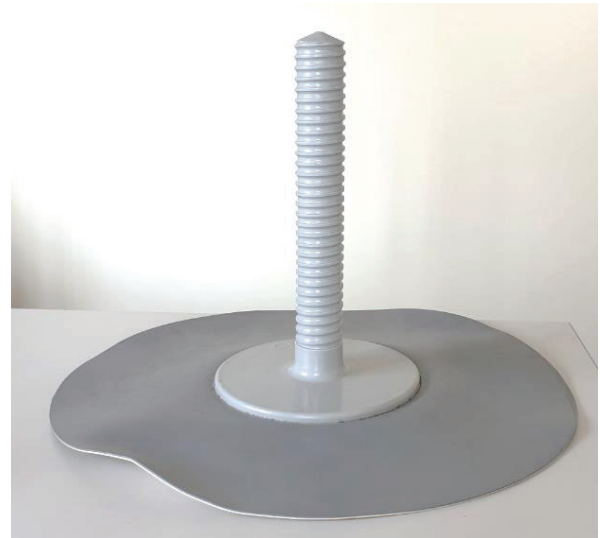
The shoulder flange of the sleeve is then welded to the Proofex PGP membrane using hot-air welding gun once the Nitomortar AP paste has hardened sufficiently.

Important notice

A Safety Data Sheet (SDS) is available from the Fosroc website. Read the SDS and TDS carefully prior to use as application or performance data may change from time to time. In emergency, contact any Poisons Information Centre (phone 13 11 26 within Australia) or a doctor for advice.

Product disclaimer

This Technical Data Sheet (TDS) summarises our best knowledge of the product, including how to use and apply the product based on the information available at the time. You should read this TDS carefully and consider the information in the context of how the product will be used, including in conjunction with any other product and the type of surfaces to, and the manner in which, the product will be applied. Our responsibility for products sold is subject to our standard terms and conditions of sale. Parchem does not accept any liability either directly or indirectly for any losses suffered in connection with the use or application of the product whether or not in accordance with any advice, specification, recommendation or information given by it.



Supply

Proofex PGP Sleeves are supplied in boxes of 30 units.

Proofex PGP Sleeve:	FC007103-UNIT
----------------------------	---------------

Storage

Proofex PGP Sleeves have a shelf life of 12 months if stored in a cool, dry store, away from sources of heat, in the original unopened packing.



constructive solutions

Sold under license from Fosroc International Limited.
Fosroc, Proofex and the Fosroc logo are trade marks of
Fosroc International Limited, used under license.

Parchem Construction Supplies Pty Ltd

7 Lucca Road, Wyong NSW 2259

Ph: 1800 812 864

www.fosroc.com.au

ABN 80 069 961 968

Distributed in New Zealand by: Concrete Plus Ltd

150 Hutt Park Road Gracefield Ph: 0800 657 156

www.fosroc.co.nz

NZBN 9429033691282

Mar 2021