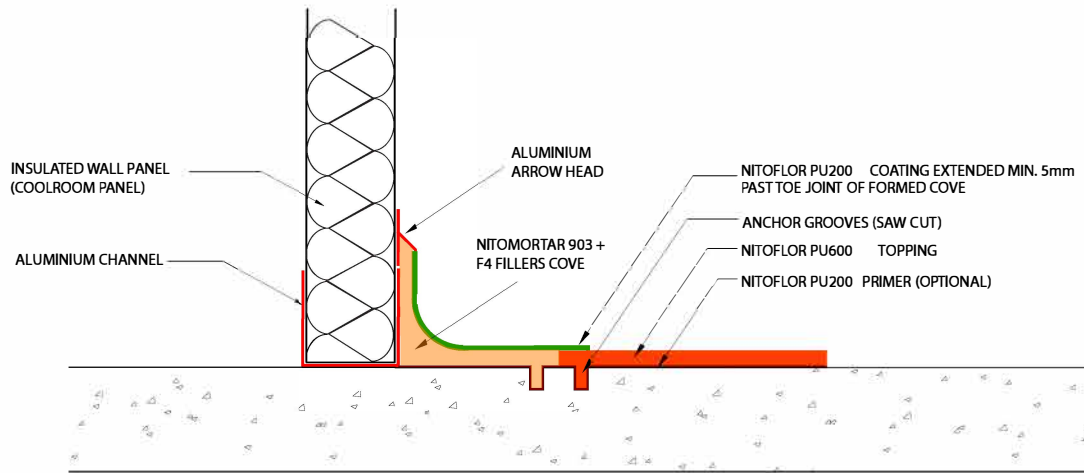


As suppliers of building and civil engineering products Parchem Construction Supplies Pty Ltd do not offer a design service. Information in this drawing is a suggestion only and must not be used for construction except as a signed off drawing by the specifier or contractor

This drawing is the copyright of Parchem Construction Supplies and must not be reproduced in any part without prior written permission



NOTE:
REFER TO TECHNICAL DATA SHEET FOR ADVICE ON SURFACE PREPARATION

TYPICAL FLOOR TO INSULATED PANEL WALL COVE DETAIL -
HEAVY DUTY POLYURETHANE FLOOR SYSTEM
NITOFLORED PU600

SCALE:- NTS
DRAWN BY:- MN
DATE:- 16/6/13
LATEST AMENDMENT:- PJ
DATE:- 24/07/19

TSD/F-SD13b

ISSUE NUMBER 3



PARCHEM CONSTRUCTION SUPPLIES
7 LUCCA ROAD, WYONG
NSW 2259
www.fosroc.com.au
1800 612 864