



## OIL-WET INCLINING PLATFORM SLIP RESISTANCE TEST

### Fosroc Nitoflor PU 200 + Silica Sand (16/30) Broadcast + Fosroc Nitoflor PU 200

**Prepared for:** Parchem Construction Supplies Pty Ltd  
Peter Battista  
7 Lucca Road  
WYONG NSW 2259

**Specimen Description:** Fosroc Nitoflor PU 200 + Silica Sand (16/30) Broadcast + Fosroc Nitoflor PU 200, 600x1100 mm.

**No. of Specimens:** 1 off

**Surface Structure:** Structured

**Specimen Preparation:** Washed with water and pH neutral detergent, rinsed then dried.

**Specimen Configuration:** Unfixed

**Test Direction:** Test direction not applicable.

**Joint Type & Width:** N/A

**Air Temperature:** 22°C

**Test Standard:** AS 4586:2013 Slip resistance classification of new pedestrian surface materials, Appendix D - Oil Wet Inclining Platform Test

**Test Shoe:** Leipzig V73-SP

**Test Location:** ATTAR, Unit 1, 64 Bridge Road, Keysborough.

**Test Date:** 16 August 2019

**Test Personnel:** Dale Siegle and Marcus Braché

<b>Displacement Space</b> (rounded to the nearest 0.5cm <sup>3</sup> /dm <sup>2</sup> ):	Not tested
<b>Displacement Space Assessment Group</b> (Appendix E, AS 4586 - 2013):	Not tested
<b>Corrected mean overall acceptance angle (<math>\alpha_{ave}</math>)</b> (rounded down to the nearest degree):	20°
<b>Classification:</b>	R11

These results apply only to the specimens tested and it is recommended that before selection of flooring or paving materials the effect of service conditions, including maintenance procedures and wear on their slip resistance be checked.

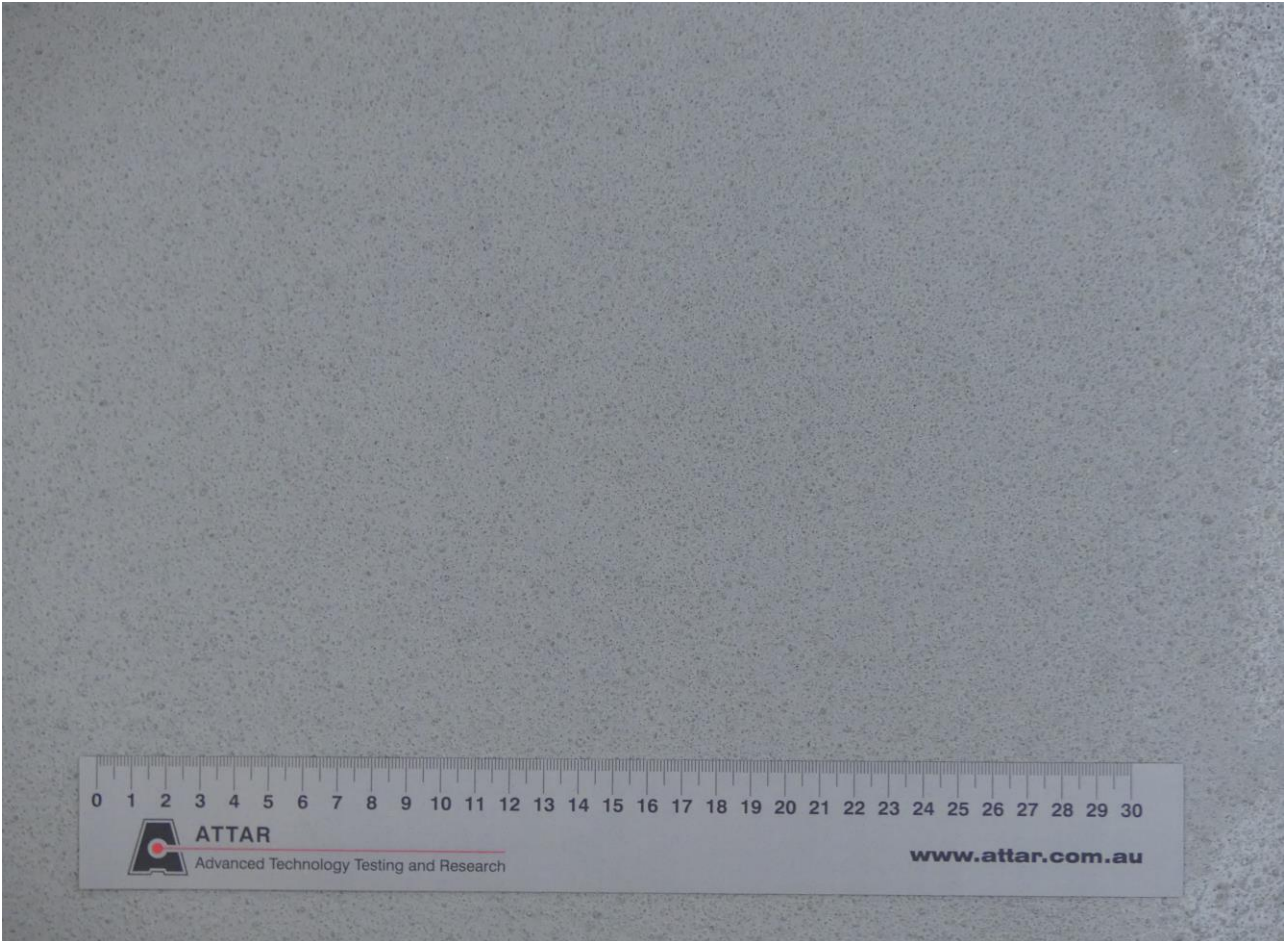


Marcus Braché  
Senior Engineering Technician  
Approved Signatory

Reviewed By:



Awel Guled  
Compliance and Test Technician  
Approved Signatory



**Figure 1:** Fosroc Nitoflor PU 200 + Silica Sand (16/30) Broadcast + Fosroc Nitoflor PU 200

**CLASSIFICATION CRITERIA – AS 4586 - 2013**  
**Oil Wet Inclining Platform Test – Appendix D**

**Compliance**

**TABLE 5: CLASSIFICATION OF PEDESTRIAN SURFACE MATERIALS ACCORDING TO THE OIL-WET INCLINING PLATFORM TEST**

<b>Classification</b>	<b>Angle, degrees</b>
No Classification	<6
R9	≥6 <10
R10	≥10 <19
R11	≥19 <27
R12	≥27 <35
R13	≥35