



OIL-WET INCLINING PLATFORM SLIP RESISTANCE TEST

Fosroc Nitoflor PA + Fostroc Nitoflor Anti-Slip Grains 41 (25g/litre)

Prepared for: Parchem Construction Supplies
 Peter Battista
 7 Lucca Road
 WYONG NSW 2259

Specimen Description: Fosroc Nitoflor PA + Fostroc Nitoflor Anti-Slip Grains 41 (25g/litre), 500x1000 mm.

No. of Specimens: 1 off

Surface Structure: Structured

Specimen Preparation: Washed with water and pH neutral detergent, rinsed then dried.

Specimen Configuration: Unfixed

Test Direction: Test direction not applicable.

Joint Type & Width: N/A

Air Temperature: 22°C

Test Standard: AS 4586:2013 Slip resistance classification of new pedestrian surface materials, Appendix D - Oil Wet Inclining Platform Test

Test Shoe: Leipzig V73-SP

Test Location: ATTAR 44-48 Rocco Drive, Scoresby, VIC, 3179

Test Date: 30 April 2021

Test Personnel: Dale Siegle and Marcus Braché

Displacement Space (rounded to the nearest 0.5cm ³ /dm ²):	Not tested
Displacement Space Assessment Group (Appendix E, AS 4586 - 2013):	Not tested
Corrected mean overall acceptance angle (α_{ave}) (rounded down to the nearest degree):	10°
Classification:	R10

These results apply only to the specimens tested and it is recommended that before selection of flooring or paving materials the effect of service conditions, including maintenance procedures and wear on their slip resistance be checked.



Marcus Braché
 Senior Engineering Technician
 Approved Signatory

Reviewed By:



Awel Guled
 Compliance and Test Technician
 Approved Signatory

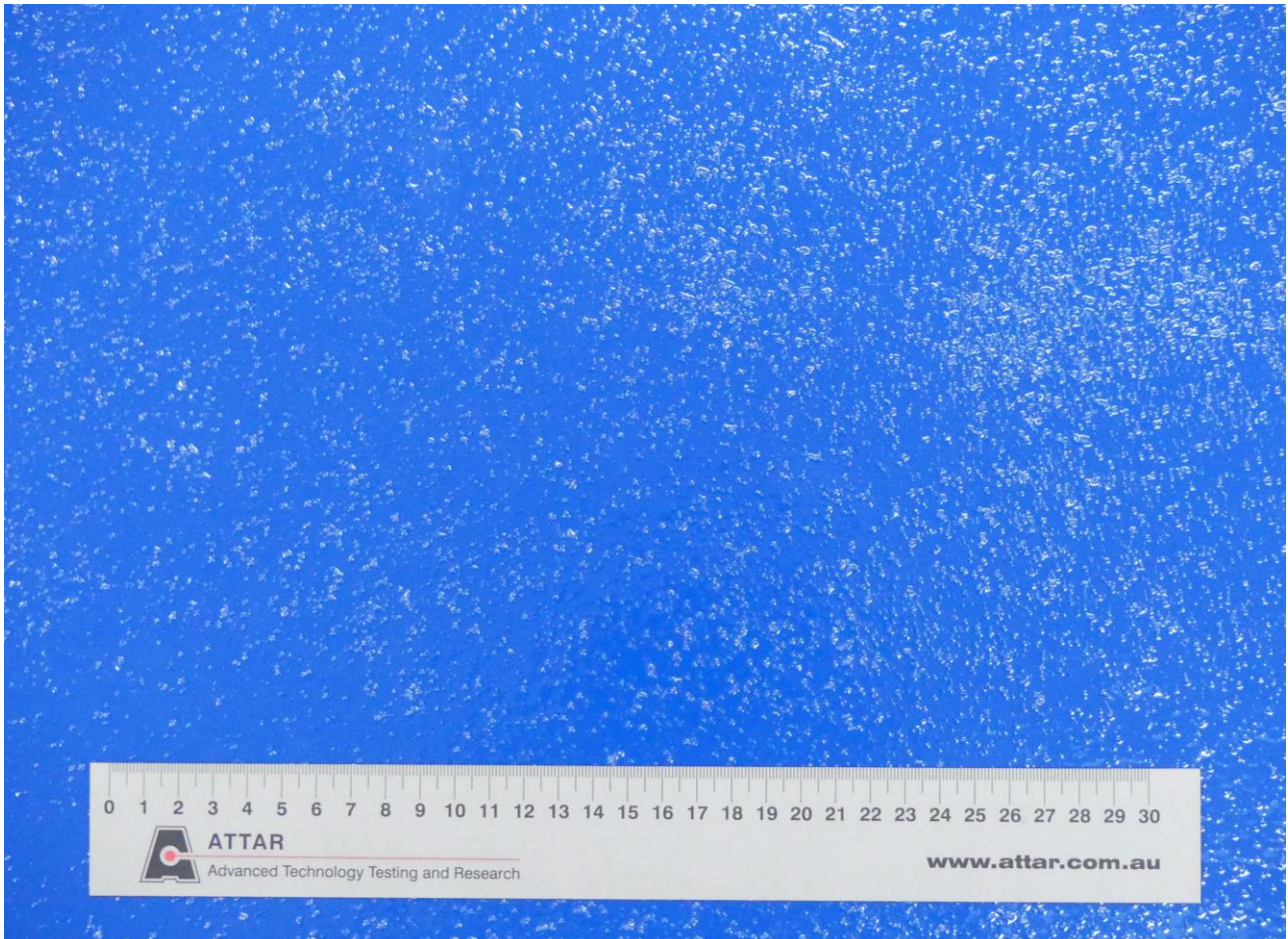


Figure 1: Fosroc Nitoflor PA + Fostroc Nitoflor Anti-Slip Grains 41 (25g/litre)



CLASSIFICATION CRITERIA – AS 4586 - 2013
Oil Wet Inclining Platform Test – Appendix D

Compliance

TABLE 5: CLASSIFICATION OF PEDESTRIAN SURFACE MATERIALS ACCORDING TO THE OIL-WET INCLINING PLATFORM TEST

Classification	Angle, degrees
No Classification	<6
R9	≥6 <10
R10	≥10 <19
R11	≥19 <27
R12	≥27 <35
R13	≥35