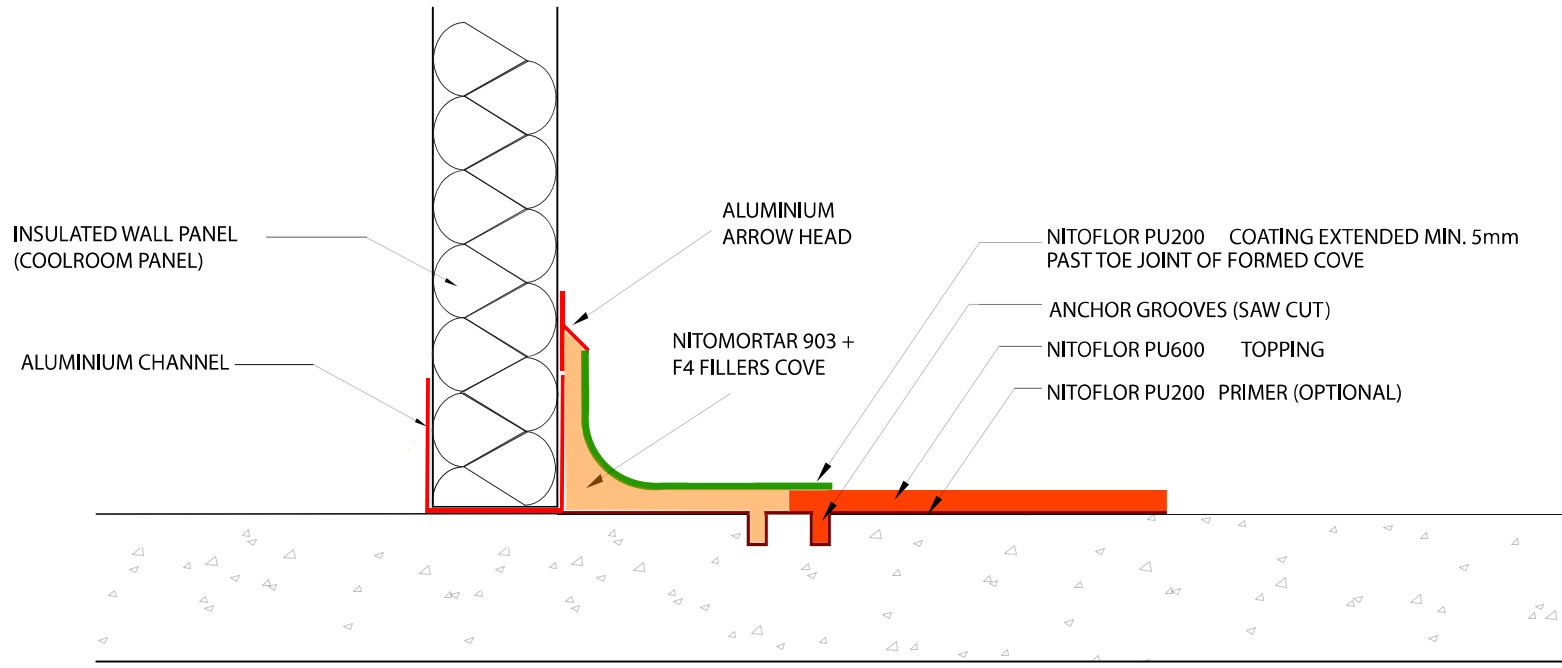


As suppliers of building and civil engineering products Parchem Construction Supplies Pty Ltd do not offer a design service. Information in this drawing is a suggestion only and must not be used for construction except as a signed off drawing by the specifier or contractor

C This drawing is the copyright of Parchem Construction Supplies and must not be reproduced in any part without prior written permission



NOTE:
REFER TO TECHNICAL DATA SHEET FOR ADVICE ON SURFACE PREPARATION

**TYPICAL FLOOR TO INSULATED PANEL WALL COVE DETAIL -
HEAVY DUTY POLYURETHANE FLOOR SYSTEM
NITOFLO PU600**

SCALE:- NTS
DRAWN BY:- MN
DATE:- 16/6/13
LATEST AMENDMENT:- PJ
DATE:- 24/07/19

TSD/F-SD13b

ISSUE NUMBER 3



PARCHEM CONSTRUCTION SUPPLIES
1956 DANDENONG RD CLAYTON VIC 3168
www.fosroc.com.au
1800 812 864
Fosroc and the Fosroc Logo, are the trade marks of Fosroc International Limited, used under licence