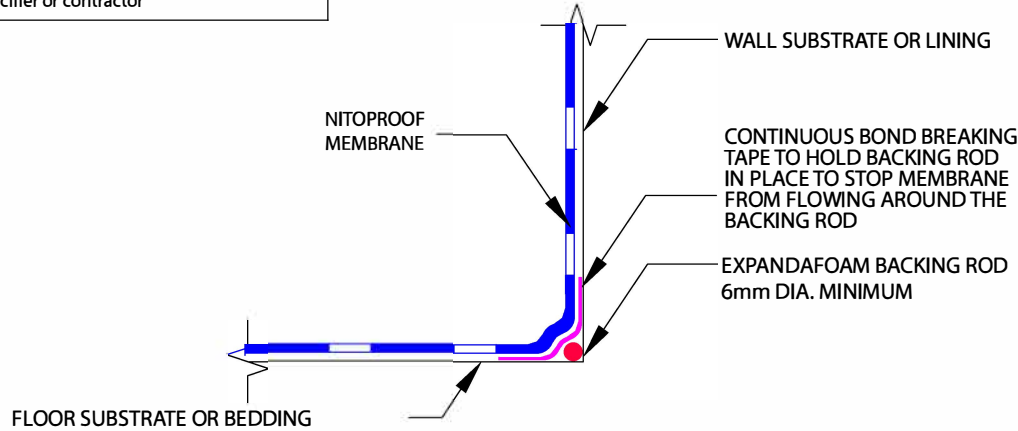


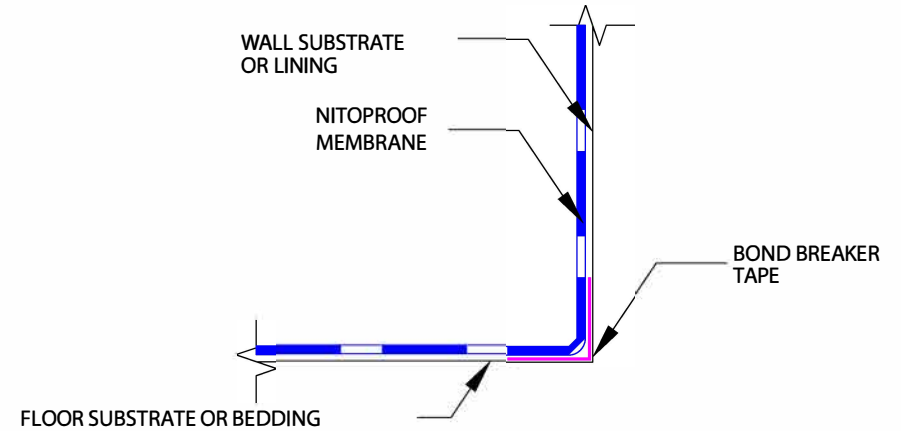
As suppliers of building and civil engineering products Parchem Construction Supplies Pty Ltd do not offer a design service. Information in this drawing is a suggestion only and must not be used for construction except as a signed off drawing by the specifier or contractor

C This drawing is the copyright of Fosroc Ltd. (modified by permission) and must not be reproduced in any part without prior written permission

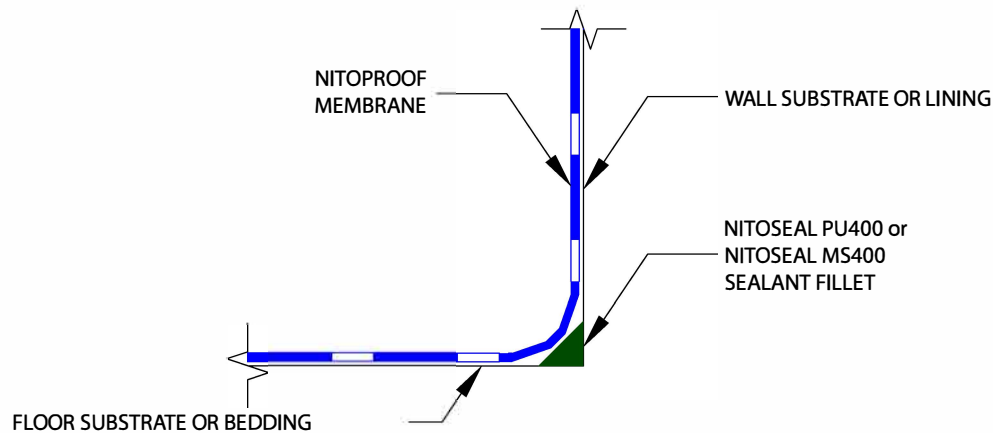
TYPICAL BOND BREAKER DETAIL FOR CLASS I MEMBRANES



TYPICAL BOND BREAKER DETAIL FOR CLASS II MEMBRANES



TYPICAL BOND BREAKER DETAIL FOR CLASS III MEMBRANES



APPROPRIATE BOND BREAKER - AS PER TABLE 3.2 AS:3740:2010

MEMBRANE CLASS	ELONGATION AT BREAK	MINIMUM BOND BREAKER / TAPE WIDTH TO BRIDGE JOINTS OPENING UP TO 5mm
I	<60%	75mm WITH BACKING ROD
II	60% TO 300%	35mm
III	>300%	12mm

**TYPICAL FLOOR TO WALL BOND BREAKER DETAILS:
CLASS I; CLASS II; AND CLASS III MEMBRANES**

SCALE:- NTS

DRAWN BY:- MN
DATE:- 16-07-13

LATEST AMENDMENT:- PJ
DATE:- 27-08-19

TSD/W-WASD02

ISSUE NUMBER 2



PARCHEM CONSTRUCTION SUPPLIES
7 LUCCA ROAD, WYONG
NSW 2259
www.fosroc.com.au
1800 812 864

Fosroc and the Fosroc logo, are the trade marks of Fosroc International Limited, used under licence